



ELK CREEK
FOREST PRODUCTS

**Quality, Integrity,
Commitment to Service.**

Specializing in premium Douglas-fir timbers and lumber. We supply the best.



COREDRY

THE BEST IN DRY DOUGLAS-FIR TIMBERS

Elk Creek Forest Products' COREDRY is specially selected from the highest quality Douglas-fir fiber available, then carefully dried up to three times longer than conventionally dried material for extra stability, performance, and appearance.

DRIED UP TO THREE TIMES LONGER
EXTRA STABILITY, PERFORMANCE,
AND APPEARANCE

RESISTS FURTHER SHRINKAGE,
CHECKING, AND WARPING

FREE OF HEART CENTER (FOHC)

FSC CERTIFIED PRODUCTS
AVAILABLE

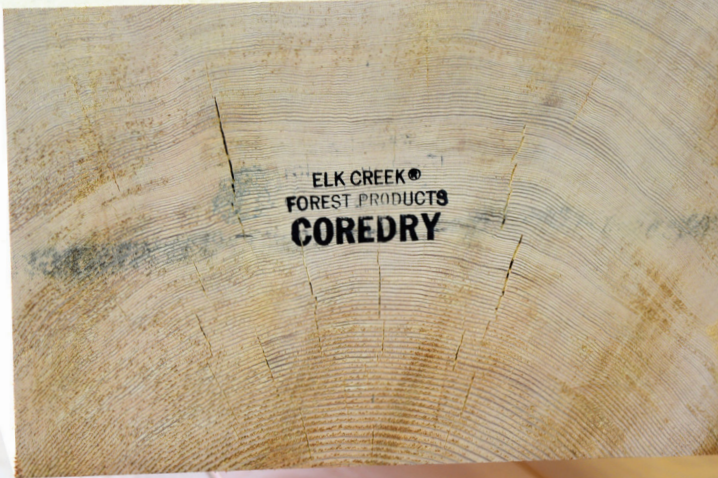




ELK CREEK
FOREST PRODUCTS

**Quality, Integrity,
Commitment to Service.**

Specializing in premium Douglas-fir timbers and lumber. We supply the best.



COREDRY

DRYING

COREDRY timbers are dried in proven conventional steam kilns at lower temperatures with specific air flow patterns for longer periods of time to minimize the moisture gradient from surface to core. This creates an exceptionally stable timber that will resist further shrinkage, checking, warping, and twist more effectively than other KD products.

QUALITY

Once dried, the timbers are further scrutinized by our WLIB certified grade inspectors to meet the COREDRY standard. All timbers are hand selected from free of heart center (FOHC) material for the best density and appearance possible. COREDRY timbers are stamped as #1 Dense or Select Structural.

AVAILABILITY

Elk Creek stocks COREDRY in a full range of sizes from 3x4 through 12x18 and can dry larger sizes to your specifications. COREDRY is originally dried as full sawn mill rough, and although surfaced, and resawn textures are the most common, many other textures are available. COREDRY is also available as an FSC certified product.



SEL STR / #1 DENSE